
How To Join Henley High School Azure AD (Windows 10 - 1607)

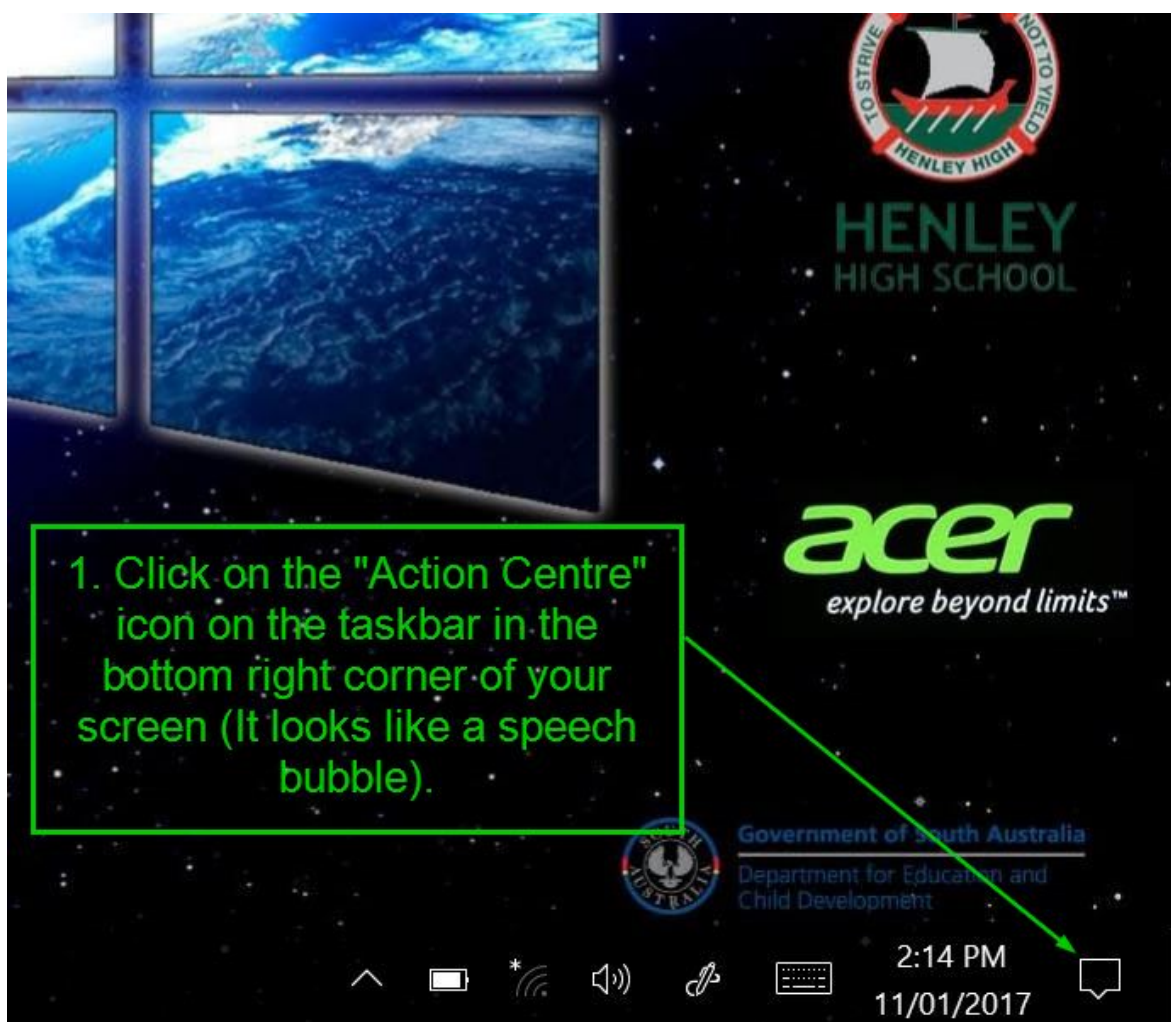
To join Henley High School Azure AD, please follow the steps below.

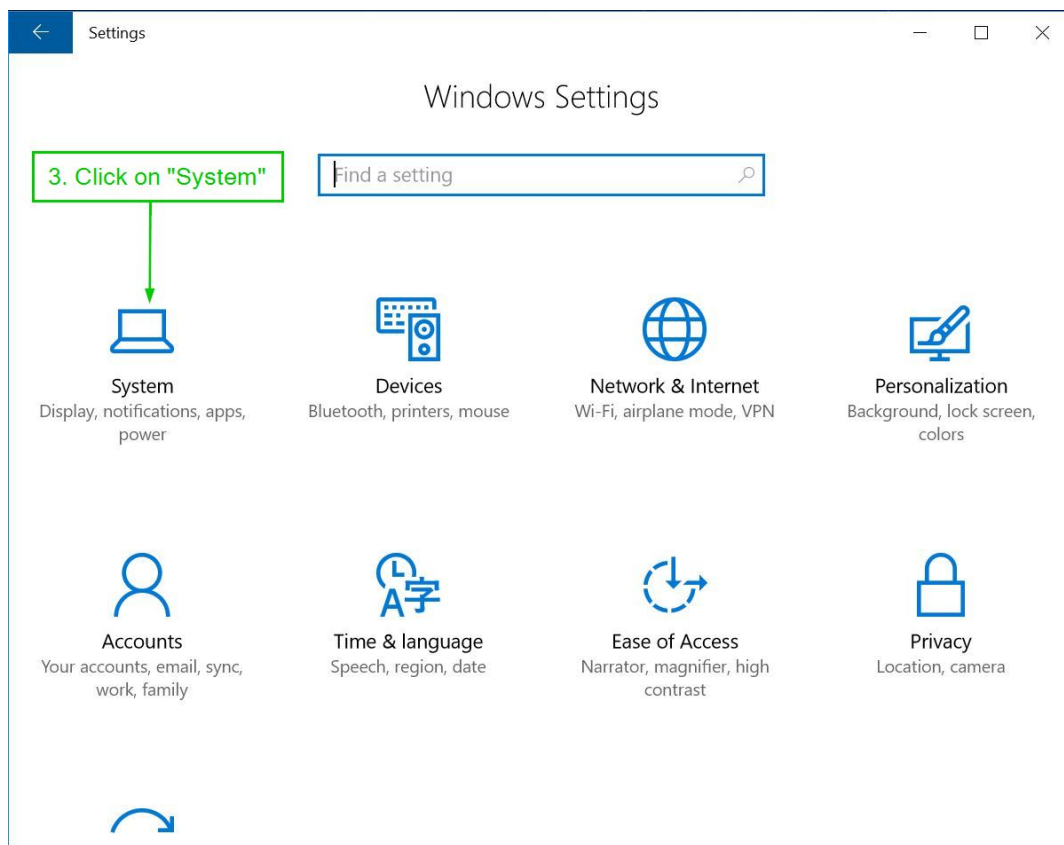
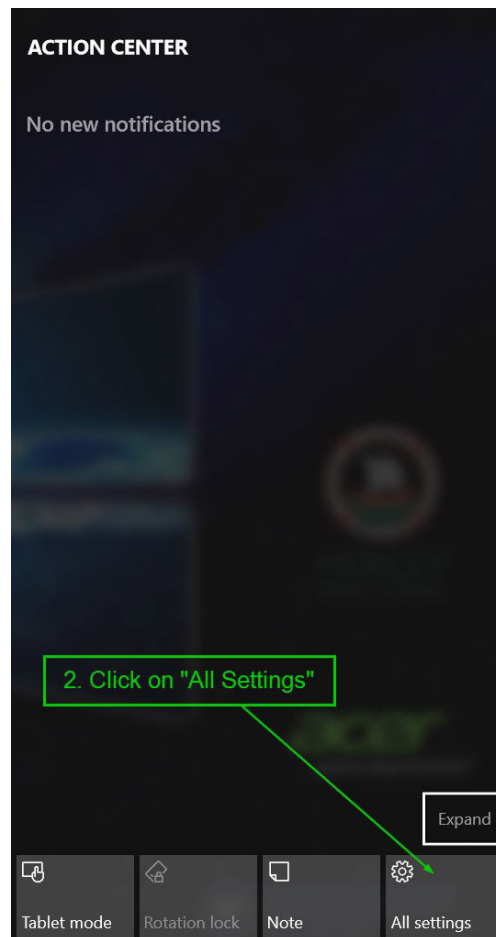
Some of the benefits of joining include single sign on (which allows you to automatically sign in to the internet and certain applications), automatic configuration of some applications and the ability to provide school related apps to you that will assist with class activities.

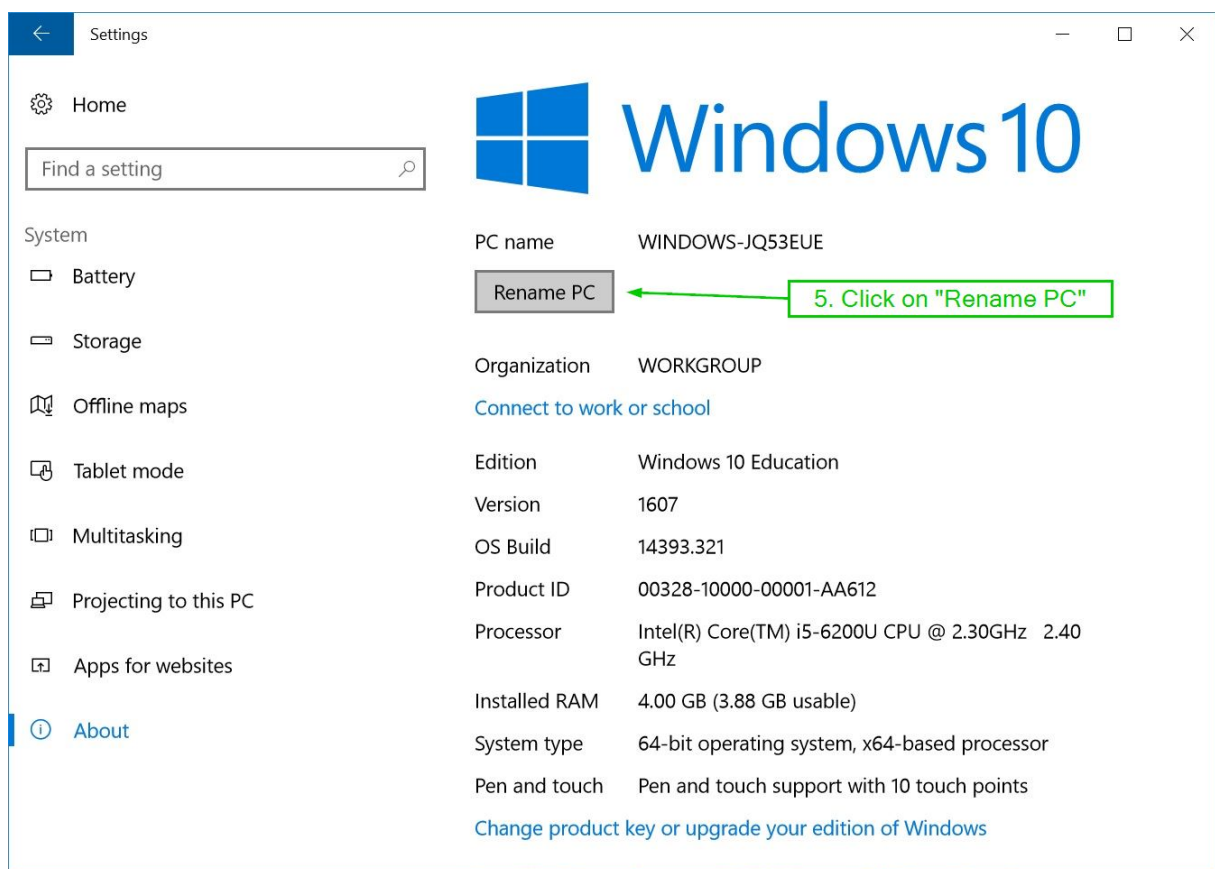
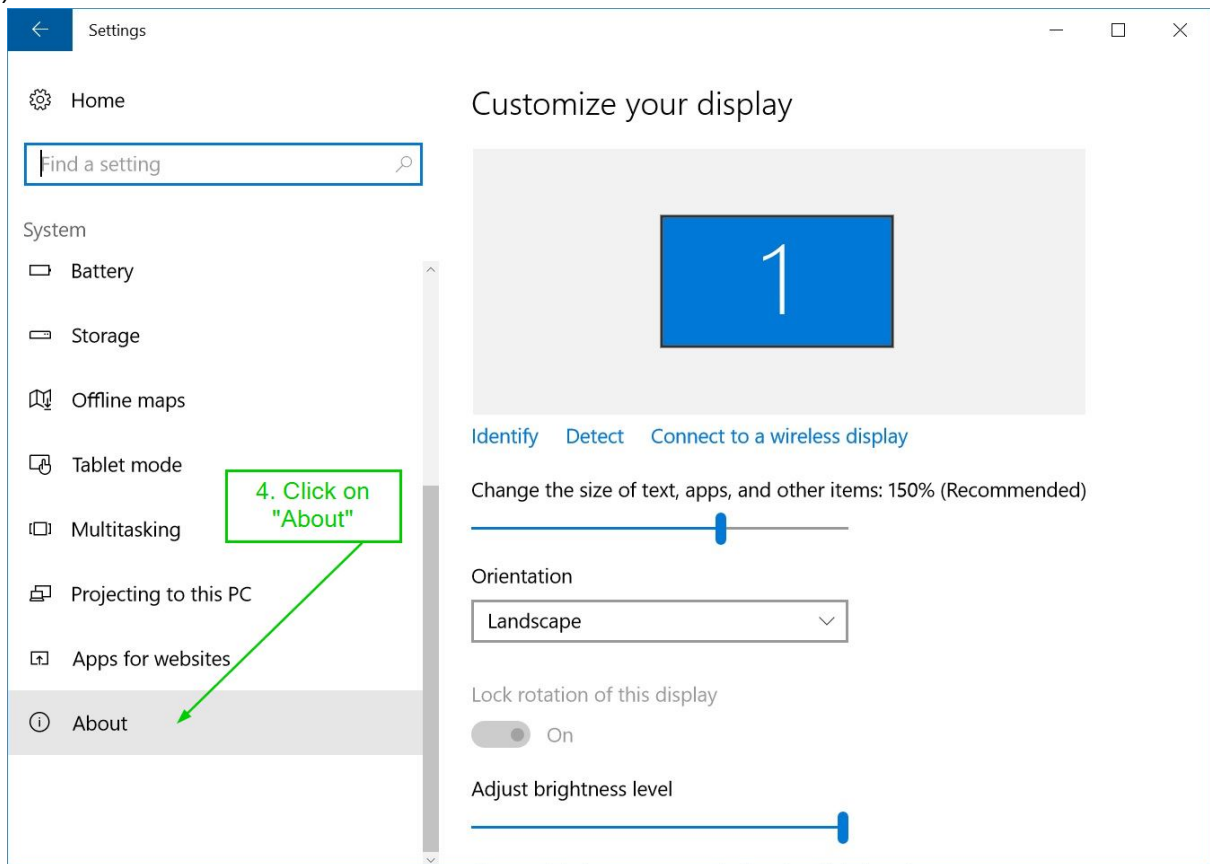
Before joining your PC to Azure AD, it is advised to change the name of your PC to match the asset label found on the underside of your laptop. The Sticker will look like the one pictured on the right. (The 4 digit number will be different on your particular laptop).

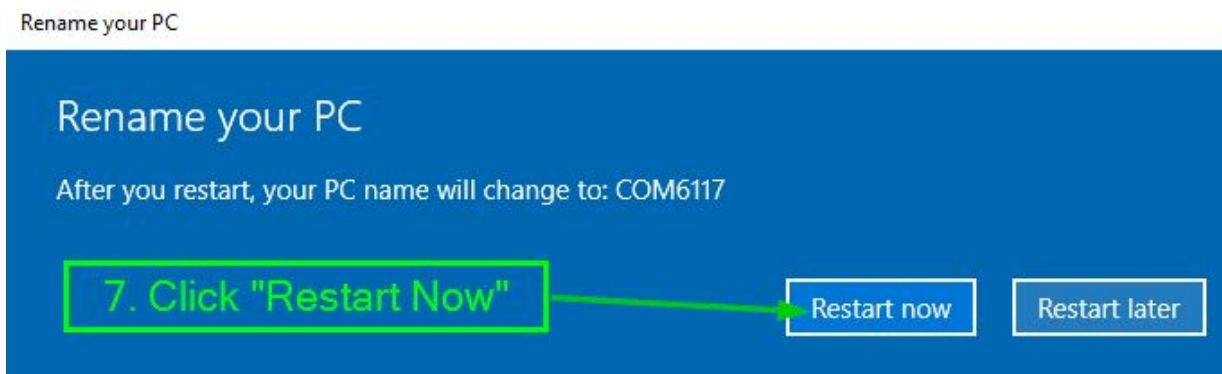
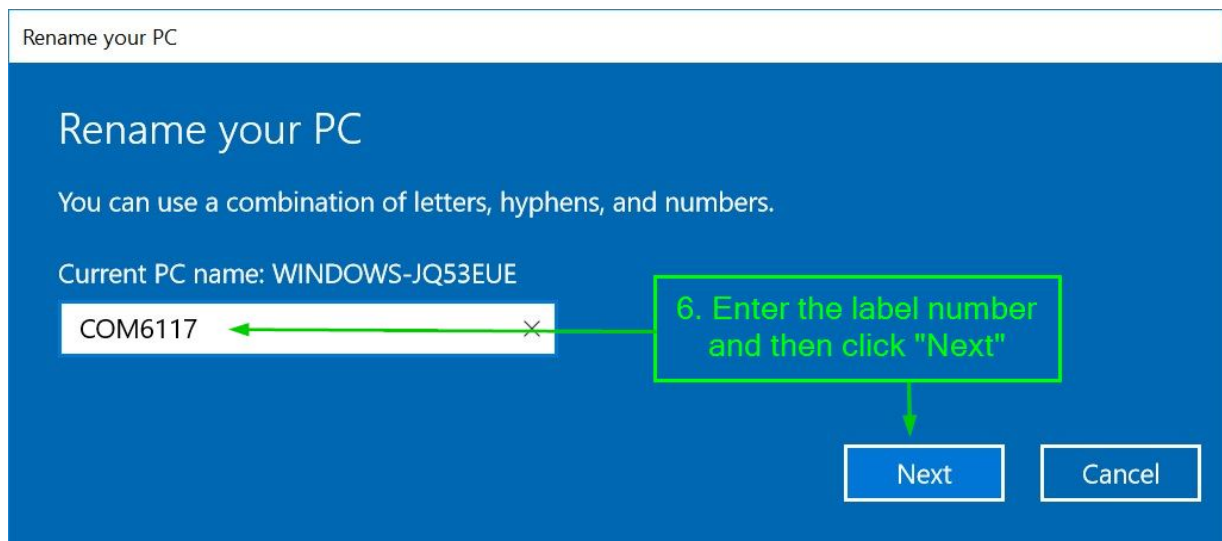


Please follow the steps below.



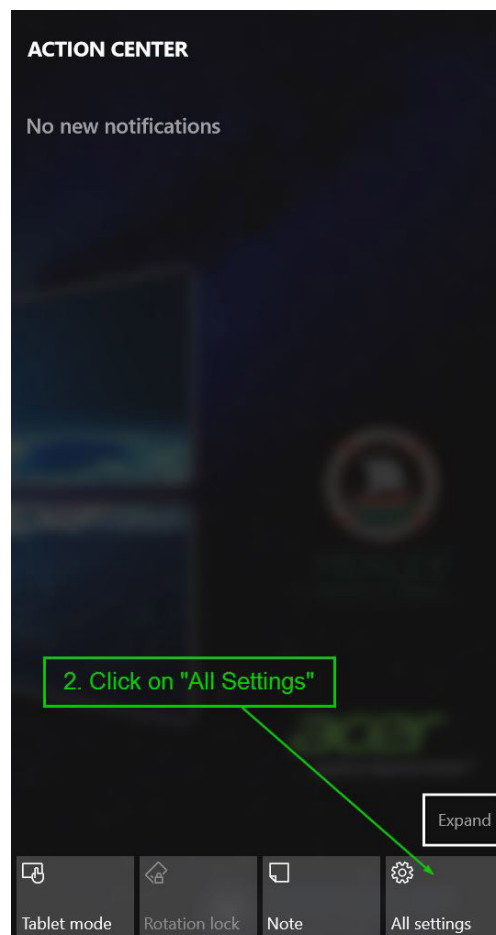
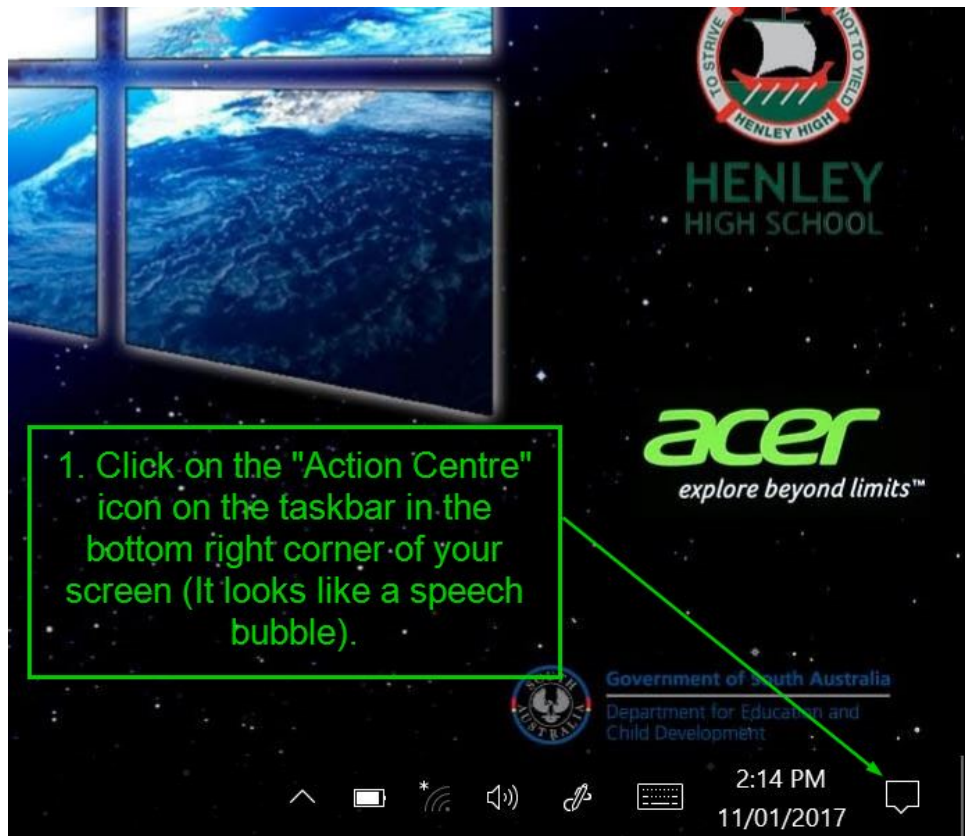


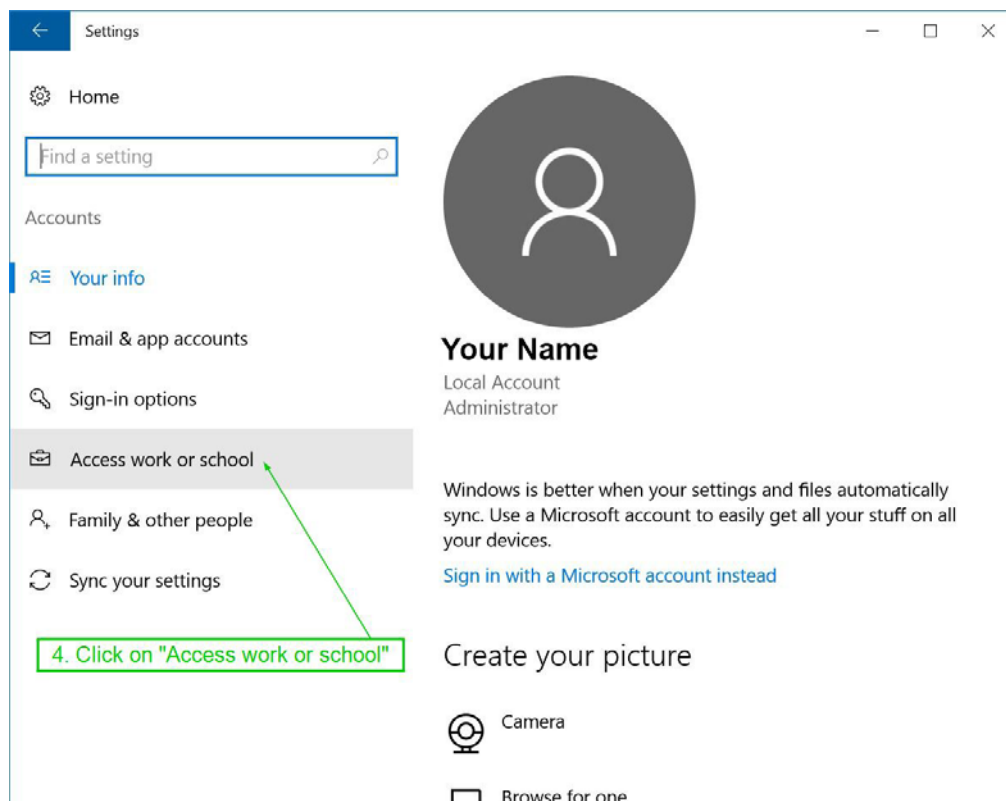
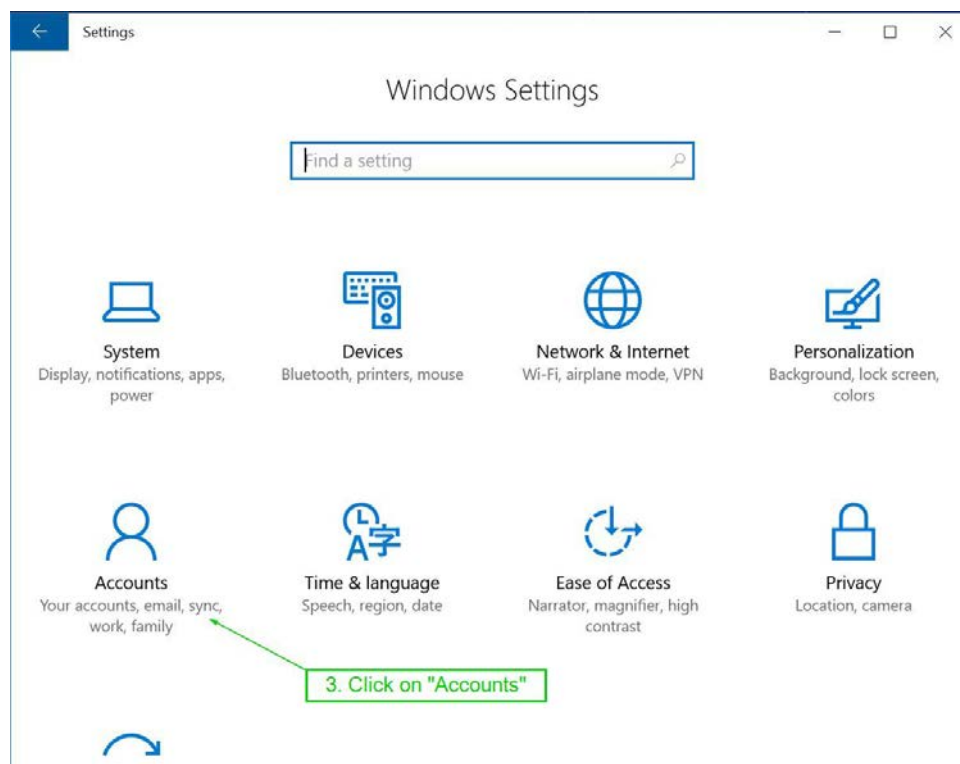


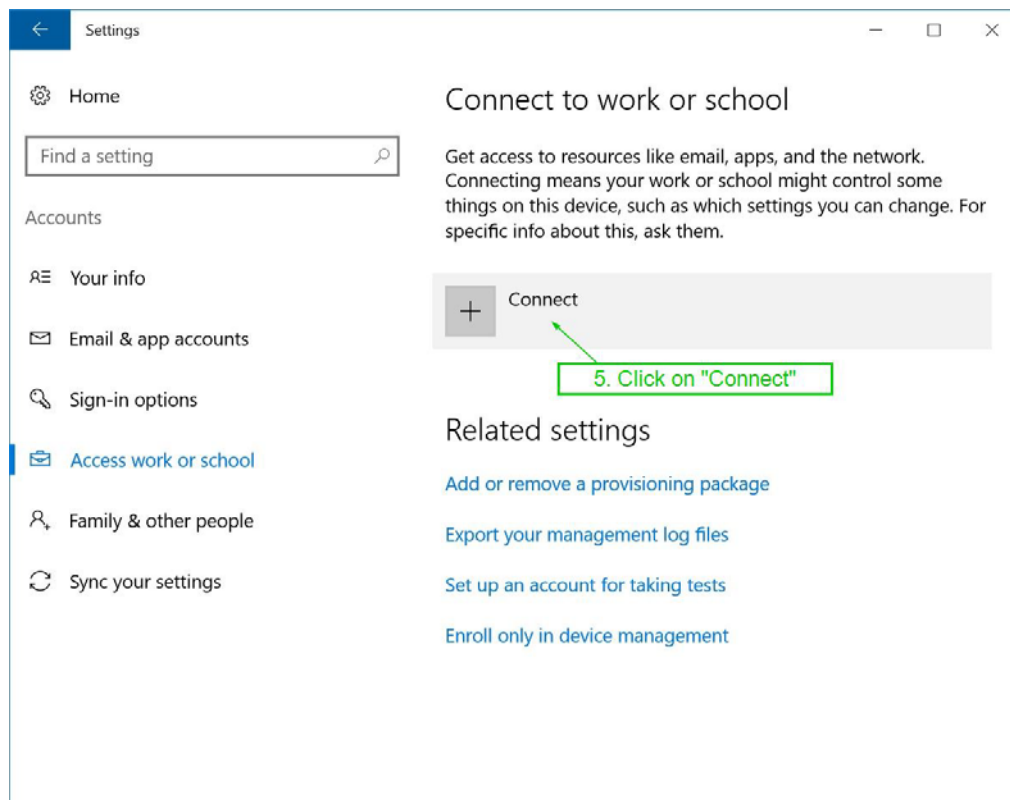


Your PC will now need to restart for the name change to take effect.

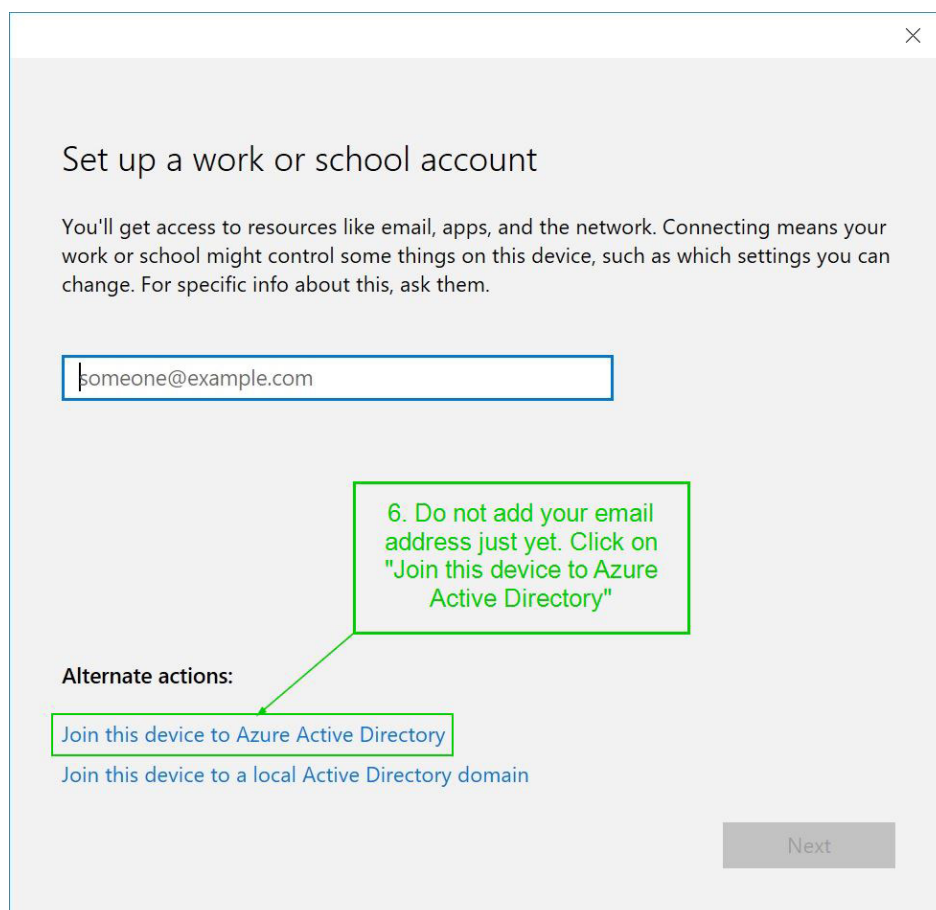
After your laptop has restarted, sign in again and go through the following steps to join your PC to Henley High School Azure Active Directory.







NOTE: The main purpose of joining Azure AD is to make signing in to applications and internet a much easier process and to provide apps and settings that will help with classroom activities. It is not for the purpose of collecting information about you and you will remain an Administrator on your laptop.



×

Let's get you signed in

7. Enter your school email address in the email address field. When you click on the password field you will be redirected to the Henley High School Portal to sign in.

Work or school account

[I forgot my password](#)

Which account should I use?

Sign in with the username and password you use with Office 365 or other business services from Microsoft.

[Privacy statement](#)

Sign in

Back

×

Henley High School

Sign in with your organizational account

Sign in

8. Once you have been redirected to the portal your email address should be prefilled. Enter your password for your school account.

© 2013 Microsoft

Make sure this is your organization

Make sure this is your organization

If you continue, system policies might be turned on or other changes might be made to your PC. Is this the right organization?

Connecting to: henleyhs.sa.edu.au
User name: Student.Name@henleyhs.sa.edu.au
User type: Administrator

9. Check you are connecting to "henleyhs.sa.edu.au" and then click "Join"

Cancel

Join

All finished!

Your device is now joined to your organization in Azure AD.

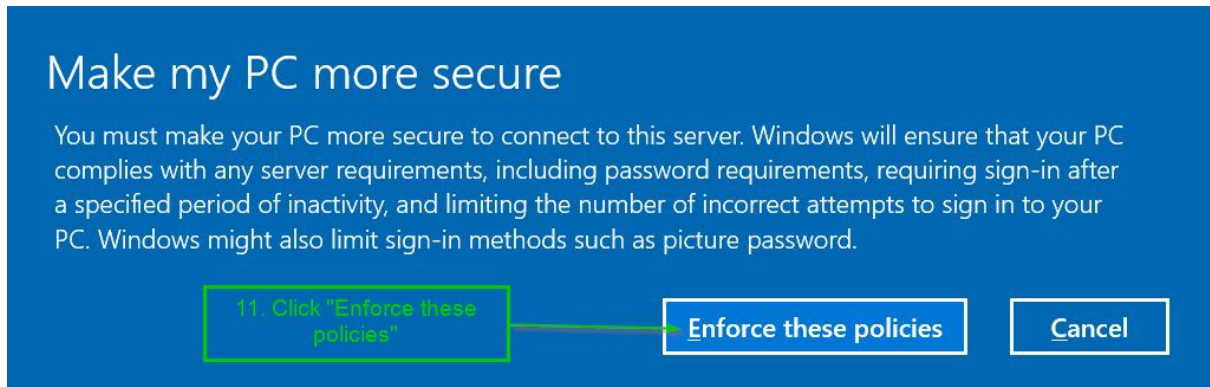
10. Click "Finish" to finish the enrolment process.

Finish

Once you restart your computer you will have the opportunity to sign in using your school email address.

NOTE: Choose "Other User" when signing in to your laptop with your email address for the first time.

Once signed in you will be presented with the following message.



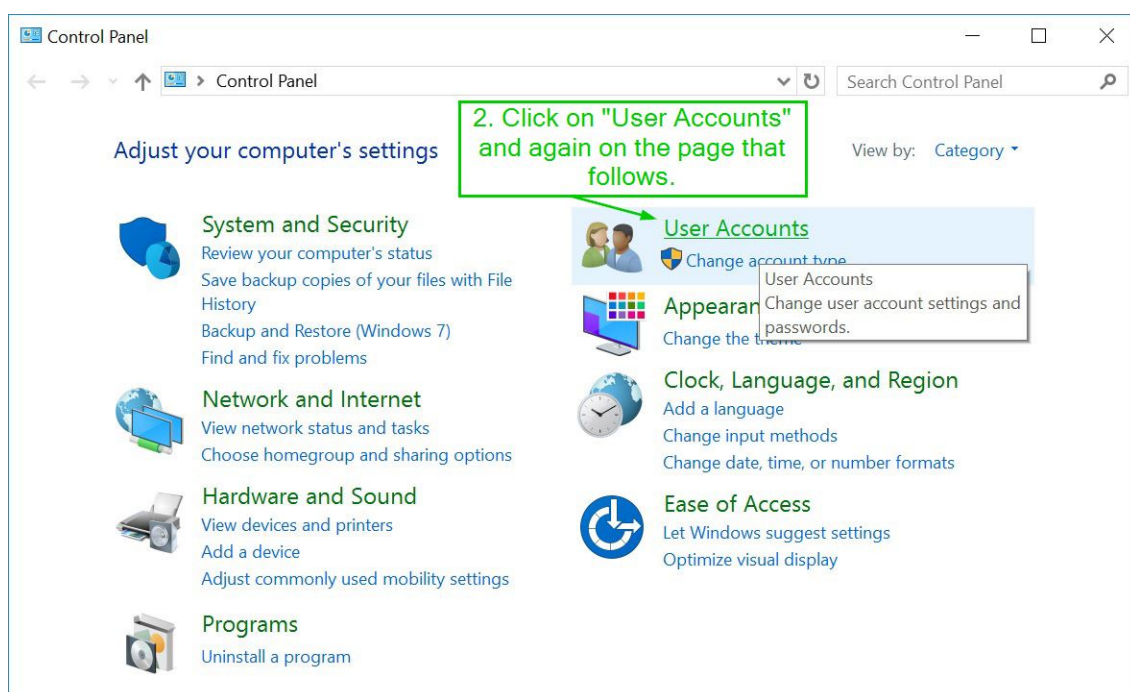
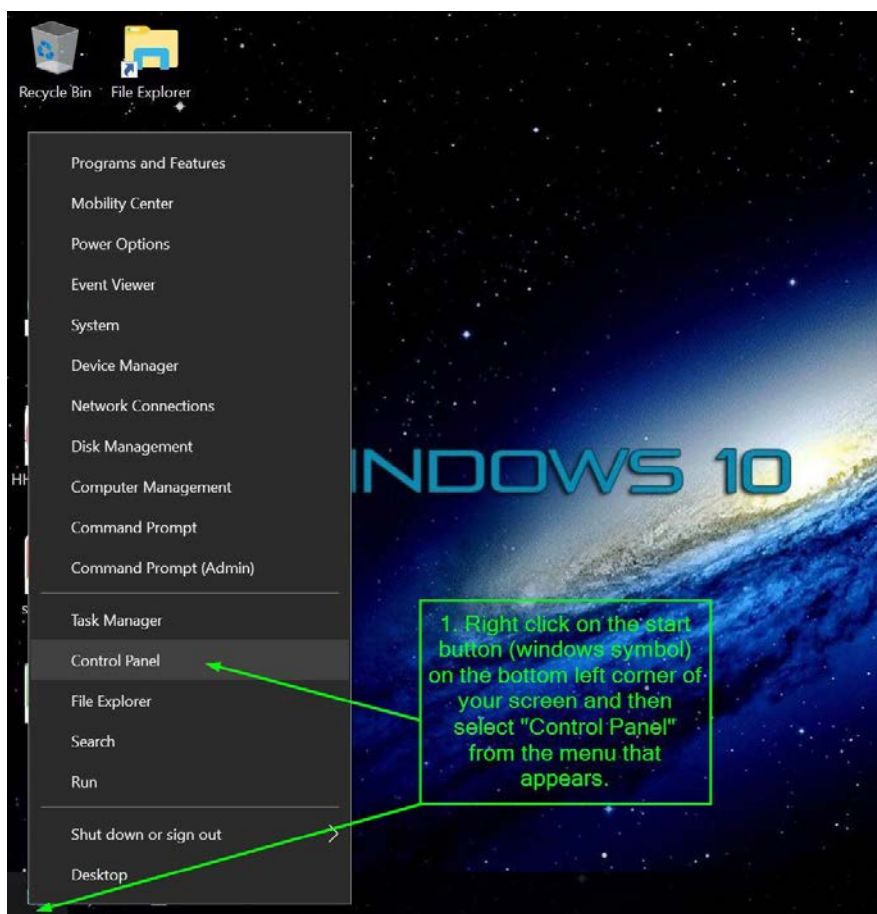
Currently no policies are being enforced other than the ability for single sign on and deploying settings and applications to your device.

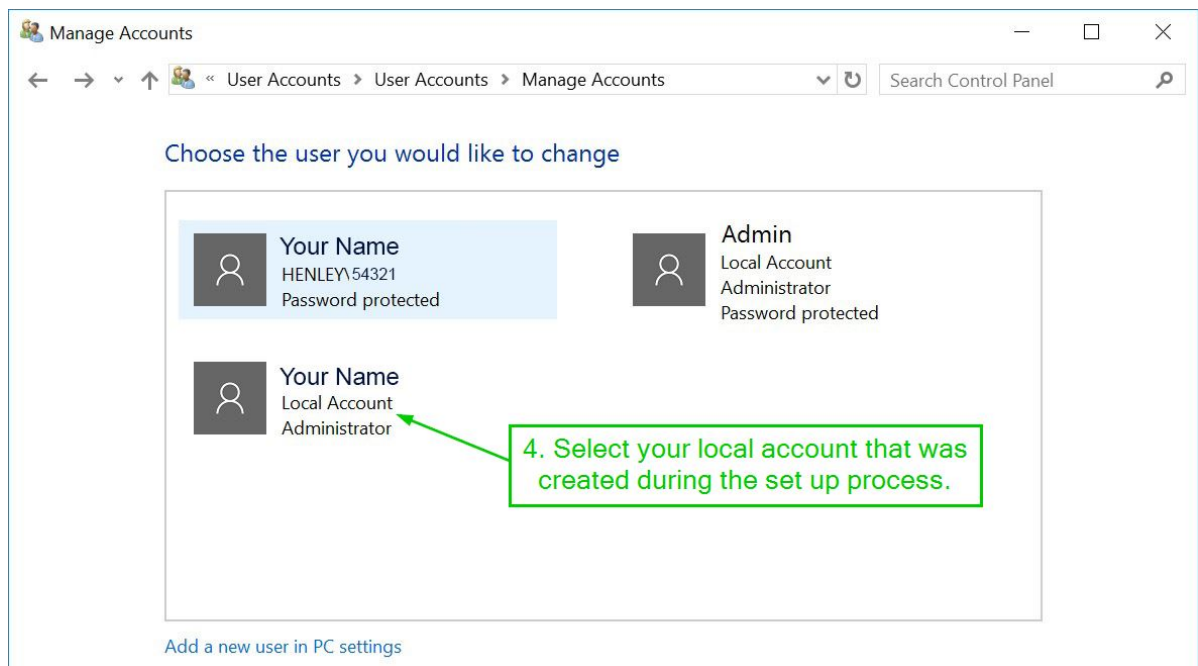
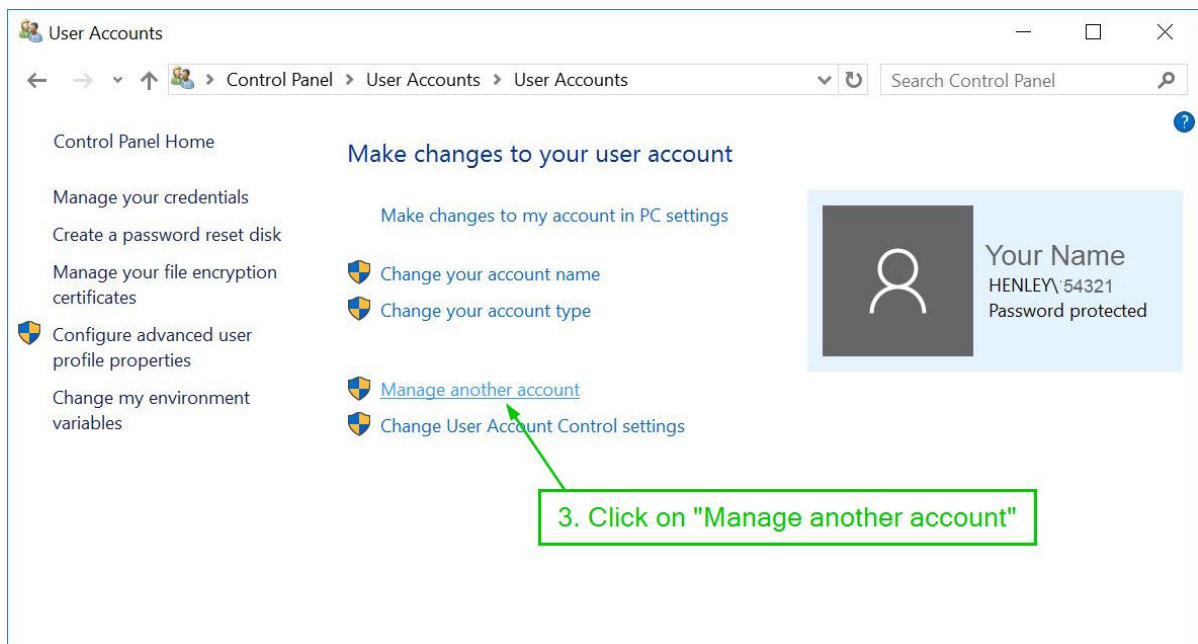
The process of joining Azure AD is now complete.

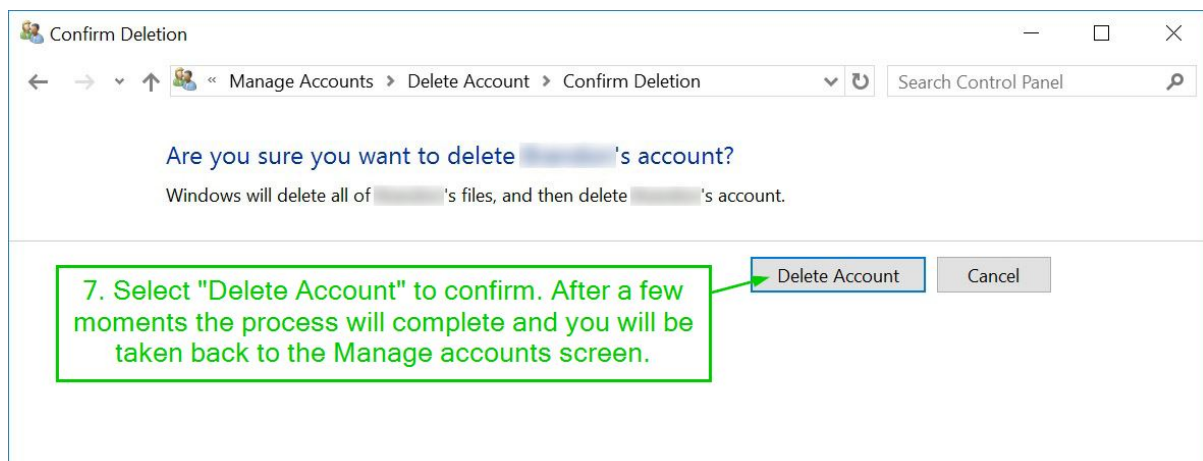
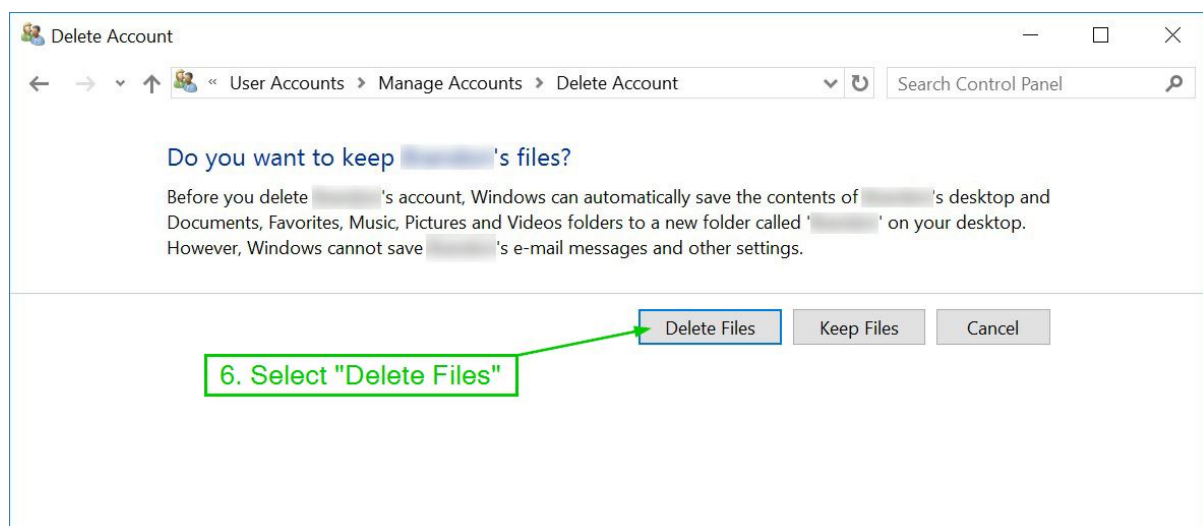
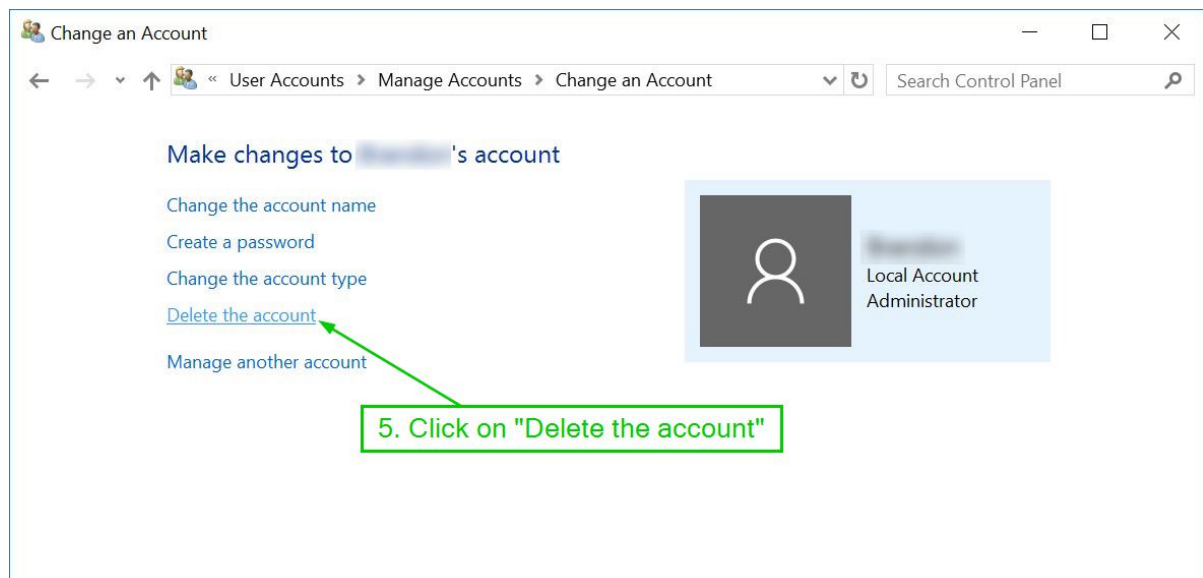
(See next page for part 2 – Remove your old user profile)

Part 2 - Remove your old user profile

For Year 8's who are setting their laptop up for the first time, it is recommended to remove the original user profile that was created during the set up process. After you have signed into your computer using your school email address. Follow the next steps to remove your old user profile.







You may now close the control panel window to complete the process.